

CLERK'S RECORDING CERTIFICATE

I, MARSHA STILLER, CLERK OF THE CIRCUIT COURT OF MARTIN COUNTY, FLORIDA, HEREBY CERTIFY THAT THIS PLAT WAS FILED FOR RECORD IN PLAT BOOK 13, PAGE 41, MARTIN COUNTY, FLORIDA, PUBLIC RECORDS THIS 15 DAY OF October, 1993.

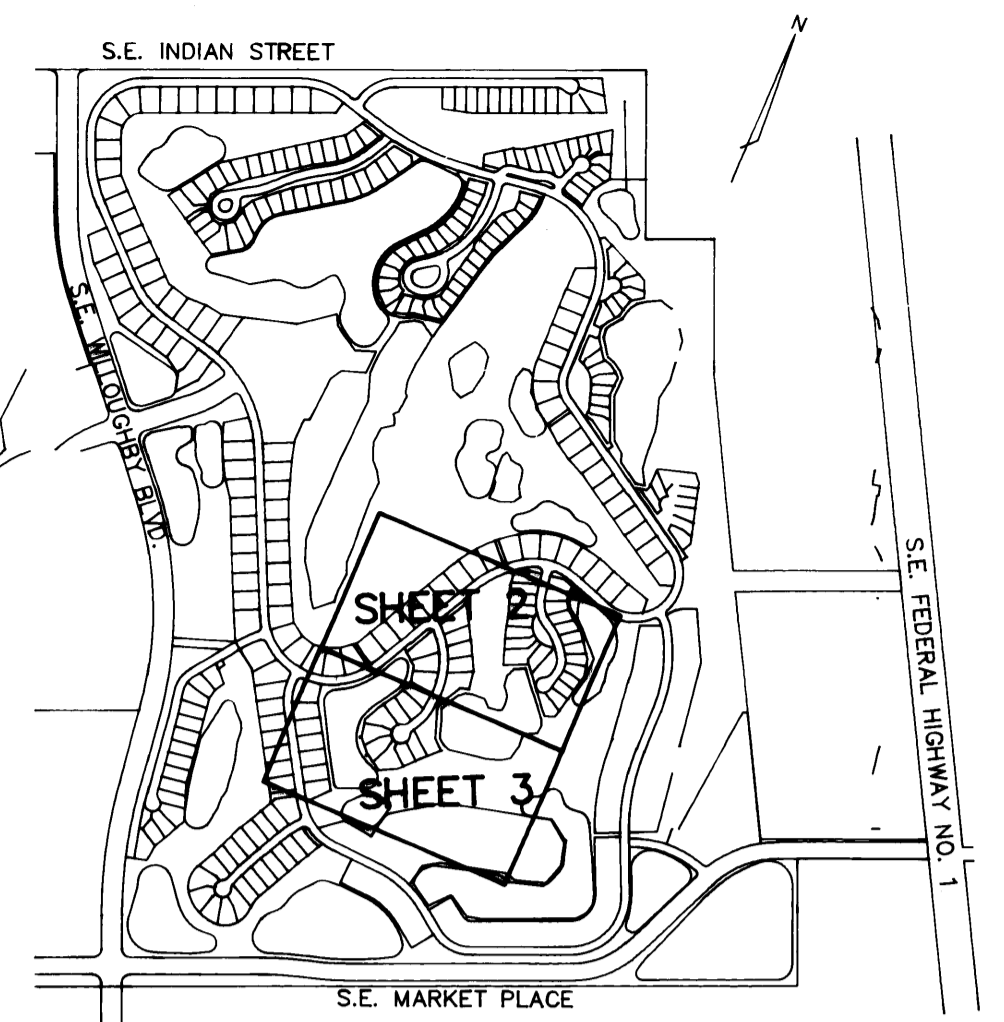
MARSHA STILLER, CLERK OF THE CIRCUIT COURT
MARTIN COUNTY, FLORIDA.
FILE NUMBER 192-4677, BY Deborah Langston
DEPUTY CLERK

SUBDIVISION PARCEL CONTROL NO.

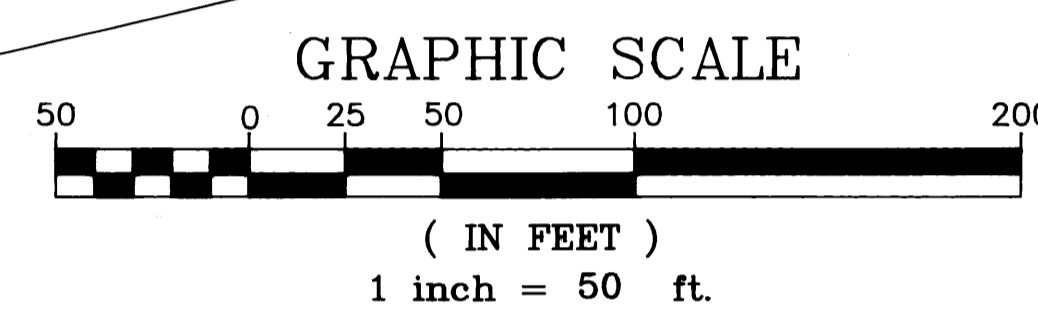
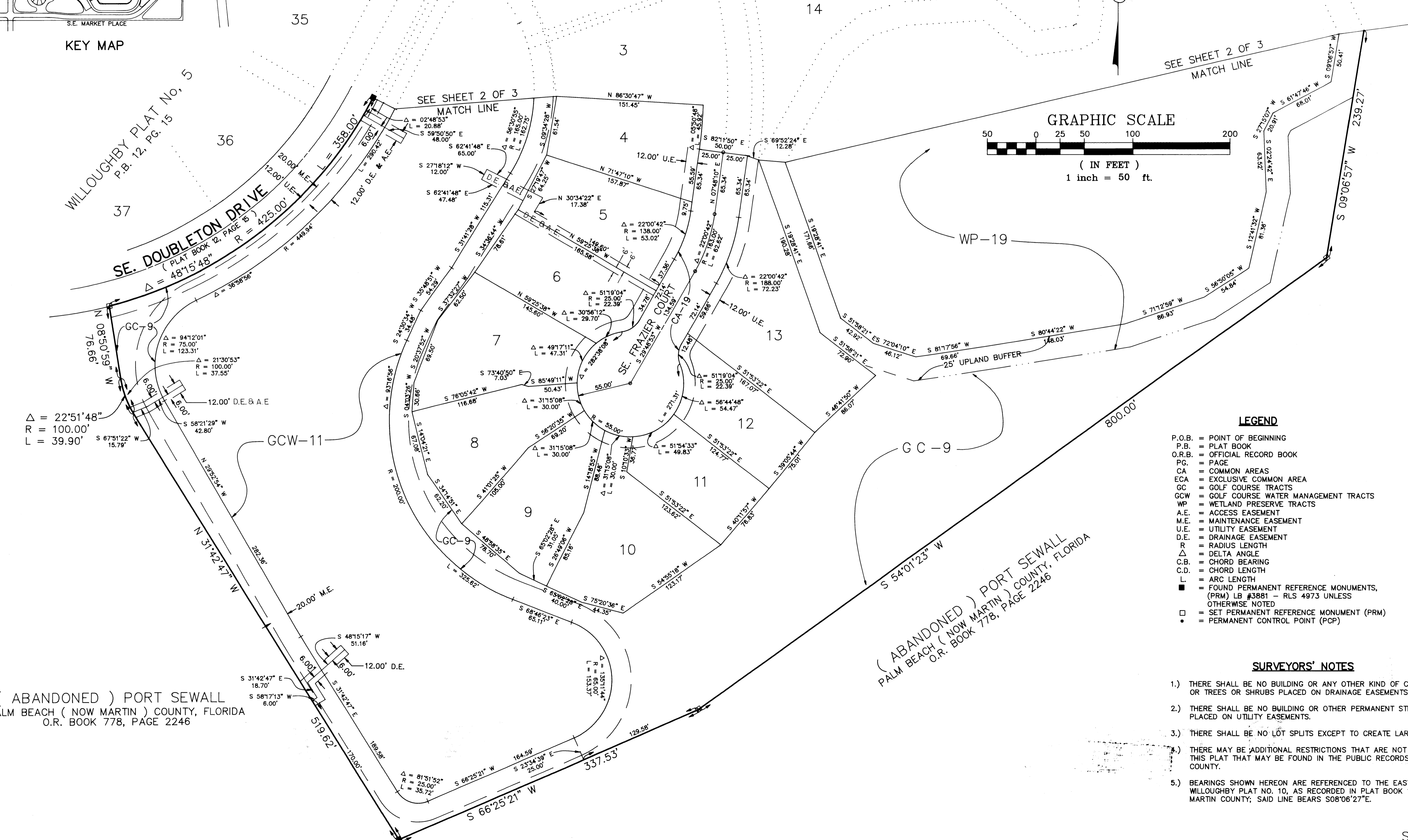
WILLOUGHBY PLAT No. 12

BEING A TRACT OF LAND LYING IN THE HANSON GRANT
SITUATED IN MARTIN COUNTY, FLORIDA

GCY
INCORPORATED
CIVIL ENGINEERS / LAND SURVEYORS
PALM CITY • 1505 S.W. MARTIN HWY. • 407 286-8083
P.O. BOX 1489, 34990
FT. PIERCE • 4075 VIRGINIA AVE. 34981 • 407 486-9500



KEY MAP



SEE SHEET 2 OF 3
MATCH LINE

WILLOUGHBY PLAT No. 5
PLAT BOOK 12, PG. 15

SE. DOUBLETON DRIVE
PLAT BOOK 12, PAGE 15
R = 4815'48"

(ABANDONED) PORT SEWALL
PALM BEACH (NOW MARTIN) COUNTY, FLORIDA
O.R. BOOK 778, PAGE 2246

LEGEND

- P.O.B. = POINT OF BEGINNING
- P.B. = PLAT BOOK
- O.R.B. = OFFICIAL RECORD BOOK
- PG. = PAGE
- CA = COMMON AREAS
- ECA = EXCLUSIVE COMMON AREA
- GC = GOLF COURSE TRACTS
- GCW = GOLF COURSE WATER MANAGEMENT TRACTS
- WP = WETLAND PRESERVE TRACTS
- A.E. = ACCESS EASEMENT
- M.E. = MAINTENANCE EASEMENT
- U.E. = UTILITY EASEMENT
- D.E. = DRAINAGE EASEMENT
- R = RADIUS LENGTH
- Δ = DELTA ANGLE
- C.B. = CHORD BEARING
- C.D. = CHORD LENGTH
- L = ARC LENGTH
- = FOUND PERMANENT REFERENCE MONUMENTS, (PRM) LB #3881 - RLS 4973 UNLESS OTHERWISE NOTED
- = SET PERMANENT REFERENCE MONUMENT (PRM)
- = PERMANENT CONTROL POINT (PCP)

SURVEYORS' NOTES

- 1.) THERE SHALL BE NO BUILDING OR ANY OTHER KIND OF CONSTRUCTION OR TREES OR SHRUBS PLACED ON DRAINAGE EASEMENTS.
- 2.) THERE SHALL BE NO BUILDING OR OTHER PERMANENT STRUCTURES PLACED ON UTILITY EASEMENTS.
- 3.) THERE SHALL BE NO LOT SPLITS EXCEPT TO CREATE LARGER LOTS.
- 4.) THERE MAY BE ADDITIONAL RESTRICTIONS THAT ARE NOT RECORDED ON THIS PLAT THAT MAY BE FOUND IN THE PUBLIC RECORDS OF THIS COUNTY.
- 5.) BEARINGS SHOWN HEREON ARE REFERENCED TO THE EAST LINE OF WILLOUGHBY PLAT NO. 10, AS RECORDED IN PLAT BOOK 13, PAGE 11, MARTIN COUNTY; SAID LINE BEARS S08°06'27"E.

(ABANDONED) PORT SEWALL
PALM BEACH (NOW MARTIN) COUNTY, FLORIDA
O.R. BOOK 778, PAGE 2246